

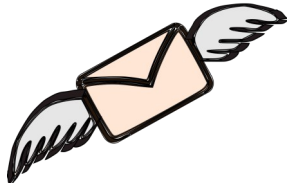
# JANUARY 2024

| SUN  | MON  | TUE  | WED | THU   | FRI   | SAT |
|--|--|--|-----|---|---|-----|
|      | 1<br>Office Closed<br>Carrying Charges Due | 2  | 3   | 4   | 5<br> | 6   |
| 7  | 8  | 9<br> | 10  | 11<br>Late Charges  | 12  | 13  |
| 14   | 15<br>Office Closed<br>Holiday             | 16   | 17  | 18  | 19  | 20  |
| 21<br>Board Meeting 6:00pm Monday  | 22<br>Attorney Referrals 8:00am Monday     | 23   | 24  | 25<br> | 26  | 27  |
| 28   | 29   | 30   | 31  |   |   |     |
|  |  |  |     |   |   |     |



## Highleah Highlights

Highleah Office: 816-257-0070  
 Website: Highleah.com  
 Board Email: htbod@highleah.com  
 Maintenance Emergency: 913-894-3441  
 Independence Police non emergency: 816-325-7300  
 Gas Service: 816-756-5252  
 Power and Light: 816-325-7930  
 Animal Shelter: 816-325-7207



## Message From the Board

“Happy New Year, Highleah.”.

Things are changing in this new year; we are saddened and greatly disappointed that Betsy from TMPS will be leaving us. We have your property covered, Mike Lauer from TMPS will be your new regional manager. He has been here on several occasions, and we welcome him to the team.

We have had a great leaf cleanup and sidewalks, driveways, and other cement work completed. We are trying our best to get the property in great shape.

Please remember to take your Christmas décor down timely and if you're looking for a place to drop off your real Christmas tree, there are several options available in Independence, Missouri. One option is Shiers Family Tree Care Service LLC located at 7300 East U.S. 40, Kansas City, MO, 64129. They are open from 6:00 AM to 4:00 PM from Monday to Saturday. You can also check out The Home Depot for Christmas tree recycling. They offer a variety of ways to recycle your tree, including using it for mulch, erosion barriers, feeding fish, and feeding birds. NO trees in the dumpsters please!

Let's all be kind to our neighbors as new families move in and others move on and have a wonderful 2024!



Jane, Jon, Sharon, Donna, Tammy





# OFFICE NEWS

January's board meeting will be on January 22nd due to the holiday on January 15th. Open session starts at 6:00.

Fine Lines have been making progress on the leaves. They are still working on the leaves as weather permits. Please be patient for the progress in your area.

Concrete work is still going on. There are piles of old concrete that still need to be picked up and more work to be completed. Please be patient while the work is in progress.

Holiday lights and decorations must be removed within 2 weeks of the holidays.



Pure local honey for sale,  
and delivery is FREE!  
Text me at 816-965-3589



Highleah Board of Directors  
Jane Leonard: Board President  
Sharon Conn: Vice President  
Donna Cates: Secretary  
Jon Jordan: Treasurer  
Tammy Sutherland: Board Member



## Winter Wordsearch

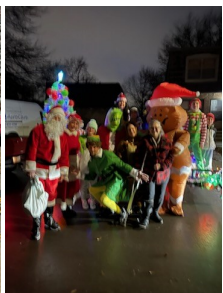


K N A M W O N S T N X O T F E  
K O W I N T E R E C O C O A L  
P I C I C L E I Z R R R B K G  
C H M B W M I T T E N S M W I  
H S G H W S Z I W D Y F E A L  
T G H Q R A K E N E Z O R F A  
O L X O D S S P R U C E I S U  
B O J E V C A R D I N A L N A  
O V R N L E B G O T A H I O R  
G E T C H I L L Y G Z O M W D  
G S P C D O K T Z G Q L K F B  
A C T S K A T E X S C L D L S  
N I Z M M Y W F E X D Y E A H  
C W N L U T G Y N S O A L K B  
S D O Q V L Q K H W M Q S E A

WINTER  
SNOWFLAKE  
SNOWMAN  
ICICLE  
SPRUCE  
HOLLY  
CARDINAL  
FROZEN  
BRRR  
CHILLY  
SLED  
GLOVES  
HAT  
SKATE  
SKI  
TOBOGGAN  
COCOA  
SHOVEL  
MITTENS



# Pictures from our Santa Parade!



## Winter Fun Facts

1. Red squirrels make mushroom jerky to prepare for the winter. Plenty of animals tuck away food for the winter, including red squirrels, who prepare a particularly unique snack to enjoy when the temperature drops. Along with storing seeds and nuts, the culinarily inclined critters dry out mushrooms in trees to make what [National Geographic](#) describes as "hand-made artisanal conifer-dried mushroom jerky." Yum!
2. Thundersnow is a rare, but real, weather phenomenon. It's not unusual to hear thunder during a [summer storm](#), but did you know that thunder can come clapping during the winter months, too? It's called thundersnow, and it's a rare weather phenomenon that refers to a [snowstorm](#) complete with both thunder and lightning. For thundersnow to occur, "the air layer closer to the ground has to be warmer than the layers above, but still cold enough to create snow," according to [CNN](#).
3. Some cities use beet juice, beer waste, and pickle brine on icy winter roads instead of salt. For years, it's been common practice to use salt on roads and sidewalks in order to melt slippery—and potentially dangerous—ice. But, [salt can actually be harmful to the environment](#) and in an effort to be more eco-friendly, some cities are using [alternative methods to melt ice](#), such as beet juice, beer waste, and pickle brine, according to [National Geographic](#). A county in Wisconsin, a state famous for its dairy, is even using cheese brine to prep roads before snowstorms!
4. Snow rollers are self-forming snowballs. Don't feel like rolling your own snowballs this winter? Then you'll want to keep an eye out for snow rollers, which, according to [National Geographic](#), are "the cold weather equivalent of tumbleweeds." Apparently, "wind pushes snow across the ground, gathering it into a hollow cylinder" and creating these self-forming snowballs.



From



Ice melt is available in the office. Just stop in and pick up a bag.

If you live on a cul-de-sac, when parking your cars do not pull all the way up to the curb. This will make for easier plowing of the sidewalks when that white stuff falls. If it has snowed and you know they will be plowing, please do not park in front of the office to allow that area to be cleared.

Make sure that your garden hoses are disconnected and the water spigots turned off from inside your unit.

Still seeing lots of items on the front porches. If it snows and they have to shovel, maintenance will not be responsible for breaking anything.

Maintenance only shovels when it snows 2 inches or more.

Reminder to change your furnace filters. We were out of filters for several weeks so if you stopped in during that time we have a restock.



It was cold and wet but a good time was had by all! Thank you for all that came out and visited. Thank you to all the characters. Can't wait for next year.

Good Neighbor Nomination

Do you have a neighbor that has gone above and beyond? Is there someone you know that goes out of their way to help others? If so, we would love for you to consider nominating them for our good neighbor award! We want to recognize individuals that strive to make our community a better place to live! They could win a \$25.00 credit on their account!

Fill out the form below and turn it in to the office. The board will review the submissions and vote on a “good neighbor” to be honored each month at the open session of the board meetings.

Submitting member’s name:

---

Submitting member’s address:

---

Submitting member’s phone number:

---

Name of the member you are nominating:

---

Address of the member you are nominating (if known)

---

---

Reason you are nominating this member:

---

---

---

---



“Ruth is always looking out for others. She has swept my steps and sidewalk. She placed a delivery box in plastic when it was raining. She’s pulled weeds.”

Thanks Ruth for being a great example of a Good Neighbor!

